

新一代 热式质量流量计 TSI 5000 系列



UNDERSTANDING, ACCELERATED

5000 系列小结

- + 多种型号可选
- + 彩色触摸屏
- + 可调整的管路接头
- + 双向气流测试
 - 增加CO₂ 校准
- + 集合多种测试功能
 - 压差，湿度和体积流量
- + 数据记录存储
- + 精度： 1.5% 或 2% 或 3% 的读数
- + 操作软件 – 基本款和高级款

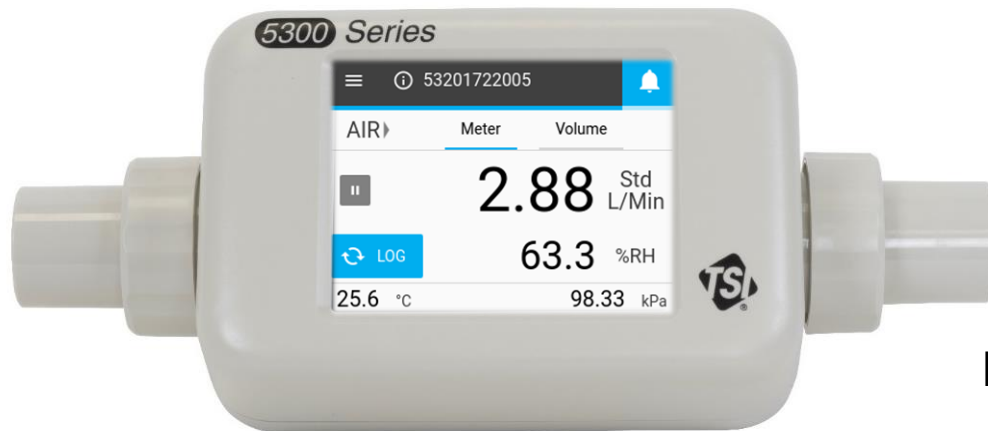


5300 高流量系列

范围: ± 300 Std Liters/min

气体种类: Air, O₂, CO₂

精度: 2% 的读数, 或 0.05 l/min



Previous 4000 Series



5200 低流量系列

量程: ± 30 Std Liters/min

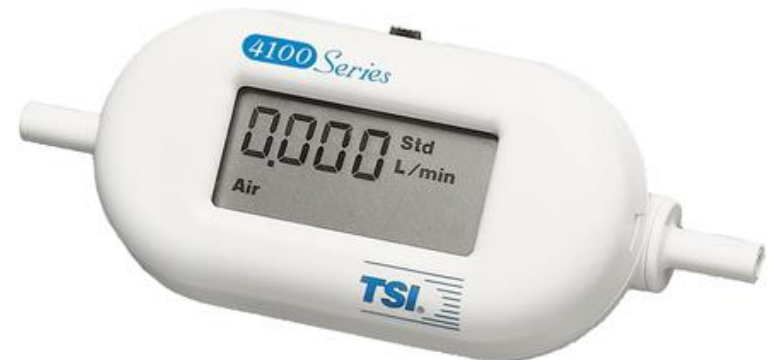
气体种类: Air, O₂, CO₂

精度: 2% 的读数 或 0.005 l/min



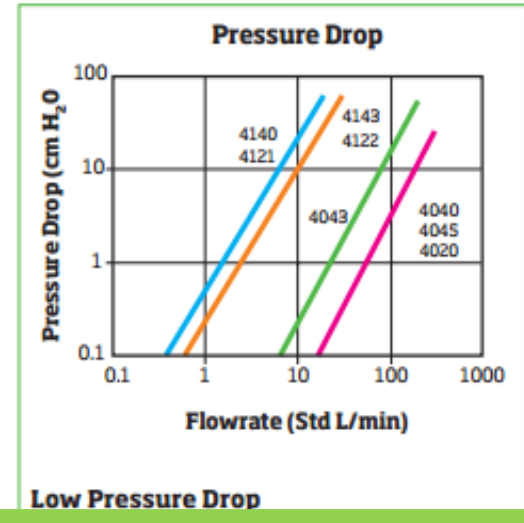
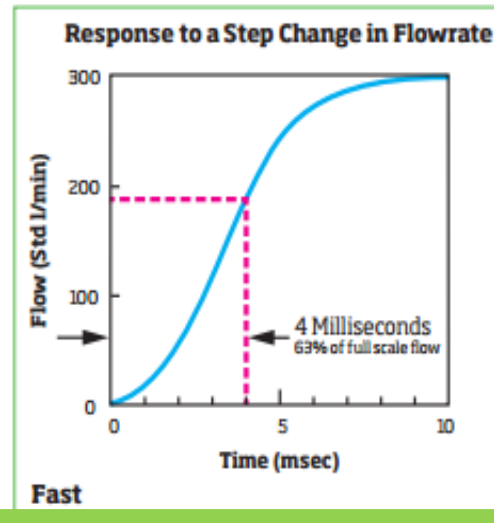
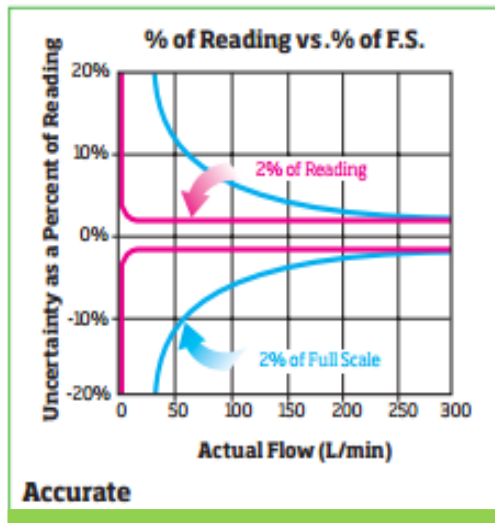
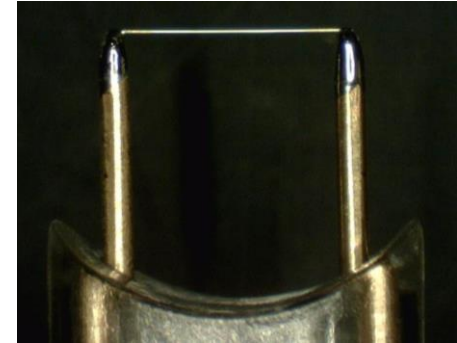
4100 Series

Range: 0.01 to 20 L/min



TSI 专利技术的铂金镀膜传感器

- + 专利传感器
- + 高精度，宽量程
- + 快速响应 (4 ms)
- + 低压降



5000 系列 vs. 4000 系列 对比

Feature	4000 Series	5000 Series
Standalone Operation		✓
Bi-directional flow		✓
Configurable tube ends		✓
Volume reading (on Meter)		✓
Diff Pressure and RH readings		✓
Data logging		✓
Humidity compensation		✓
Increased accuracy (1.5%)		✓
Full-featured software		✓
Analog output	✓	
Lowest pressure drop	✓	
N2O gas calibration	✓	



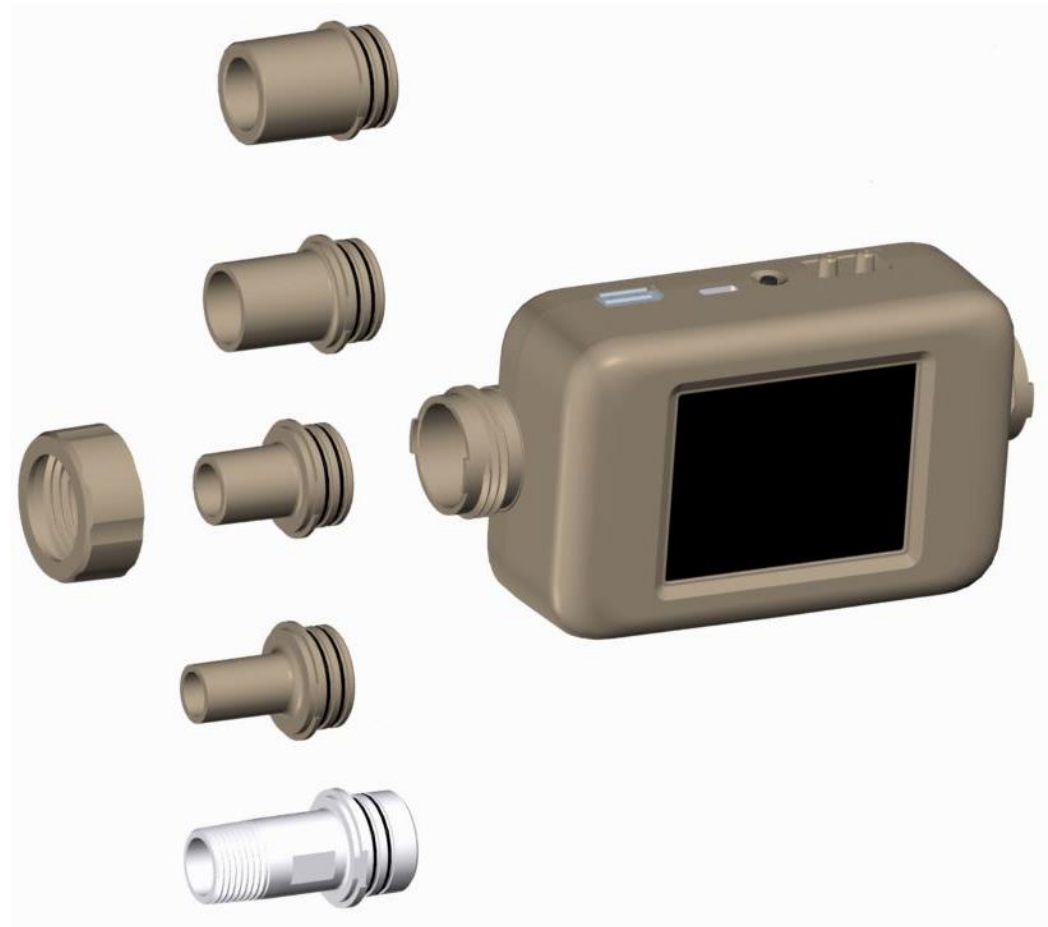
可更换接头

+ 5300 Series (高流量)

- 22mm ISO
- 1/2 inch
- 3/4 inch
- 15mm ISO
- 3/8 inch NPT

+ 5200 Series (低流量)

- 1/4 inch
- 3/8 inch
- 10mm



5000 系列型号说明

Gas Calibrations	Air Only	Air, O2, Air/O2 mix	Air, CO2	O2 Only	CO2 Only
5300 Series High Flow					
Base Models	5300-1	5300-2	5300-3	5300-4	5300-5
Advanced Models	5310-1	5310-2	5310-3	5310-4	5310-5
Humidity Model		5320-2			
High Accuracy Model		5330-2			
Wide Accuracy Model		5303-2			
5200 Series Low Flow					
Base Models	5200-1	5200-2	5200-3	5200-6	5200-7
Advanced Models	5210-1	5210-2	5210-3	5210-6	5210-7
Humidity Model		5220-2			
High Accuracy Model		5230-2			
Wide Accuracy Model		5203-2			



FLO-Sight™ PC 软件

- + 实时数据显示
 - Min, max, 平均
- + 实时图形显示
- + 仪器设置
- + 数据记录
- + 设置报警
- + 可同时操作2台仪器
- + 多种语言（升级中）



Your Flow Meter Redefined

Introducing our all-in-one gas mass flow meter

